

## Payment methods:

In our e-shop, you can pay with a newer and more secure payment method - **KLIX**. This is a payment method developed by Citadele Bank, which ensures the security of your data and money. **KLIX** offers you the possibility to pay by card, directly from your bank account, and to pay in instalments after receiving a loan offer.

**KLIX Pay by card** - possibility to pay with VISA and Mastercard. When making a payment for the first time, the buyer can agree on the payment form to save the card details in the **KLIX** application. If you agree to save your card details, you will be able to pay faster the next time you use **KLIX** on any website, as your card details will already be automatically filled in. The **KLIX** card payment system complies with the requirements of the Industry Data Security Standard (PCI DSS).

**KLIX payments** from a bank account. This is a fast and secure payment method that allows you to pay for online purchases. To make a payment, select your bank, log in and confirm the payment. **KLIX** is a secure bank payment originator providing a service in accordance with the European Union's Payment Services Directive 2007/64/EC (PSD 1).

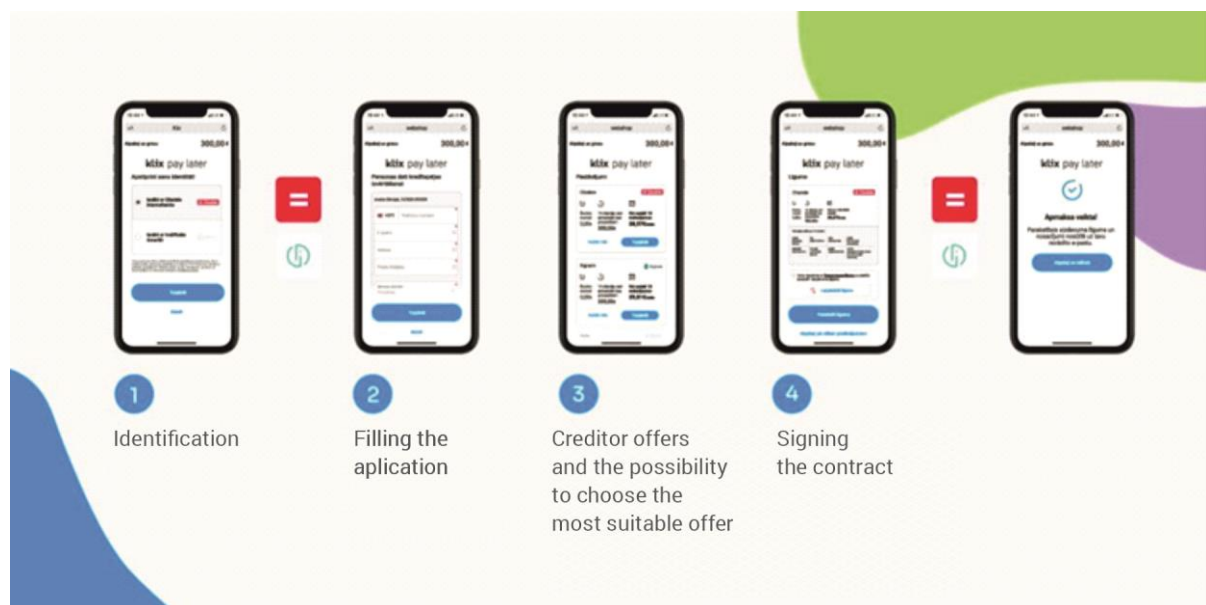
**KLIX Pay Later** enables e-shoppers to buy today and pay for their purchases later.

Financing conditions for hire purchase with **KLIX**:

- It takes just a few minutes to conclude a contract;
- We finance the price of an item or basket of goods from €70 to €7000;
- Purchase your goods now and divide the order amount into equal monthly instalments;
- Make your purchase with or without an initial down payment;
- When you buy a product on hire purchase, you will immediately become the owner of the product.

By making a purchase and selecting **KLIX Pay Later**, e-shop visitors will be able to receive offers from **KLIX** partner lenders, compare and choose the most suitable offer, and remotely sign a hire purchase loan agreement.

## Instructions for use



Illustrative photo.